

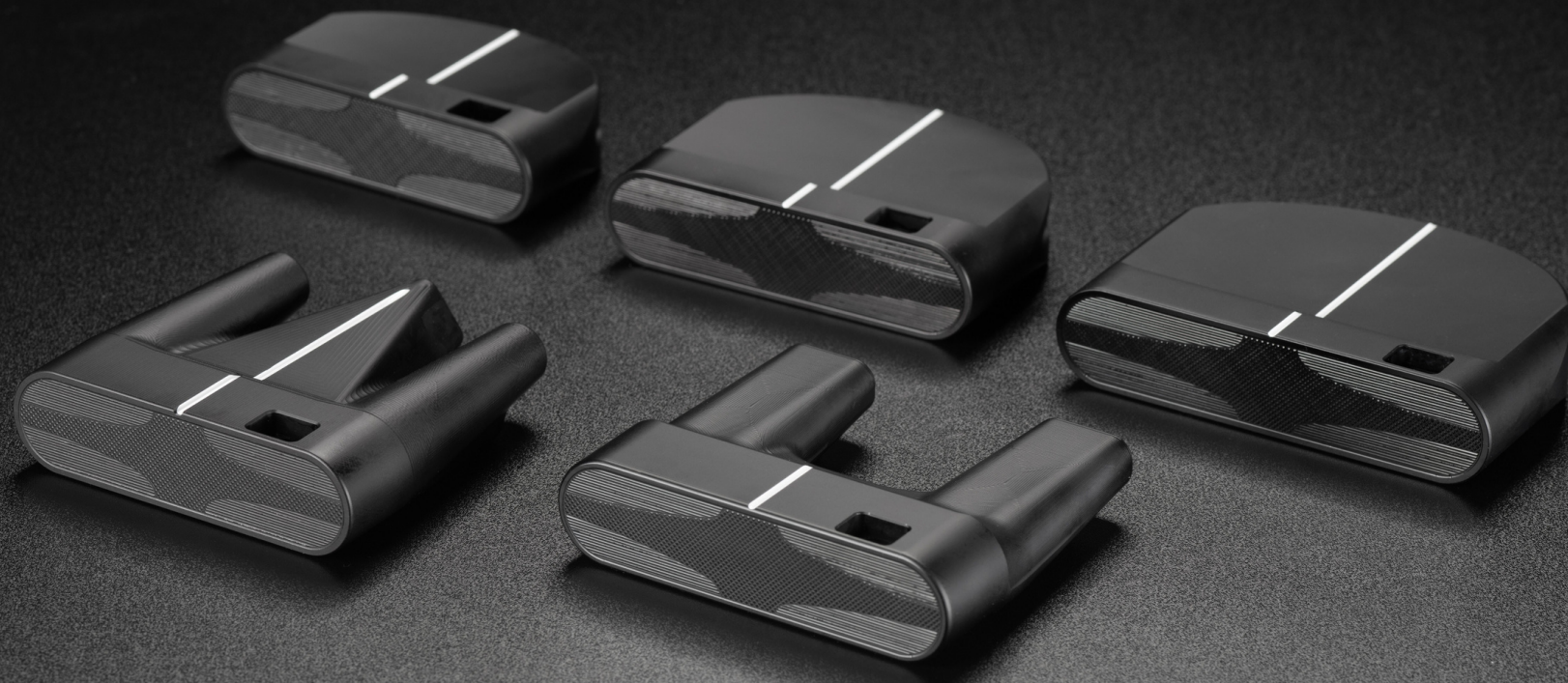


## **X3 WEIGHT SYSTEM**

**DRIVER WEIGHT TECHNOLOGY IN A PUTTER**

**MAKEFIELD PUTTERS' X3 WEIGHT SYSTEM USES ALUMINUM, STAINLESS STEEL, AND TUNGSTEN TO CREATE ENDLESS CUSTOMIZABLE OPTIONS TO ACCOMMODATE DIFFERENT KINDS OF STROKES, SKILL LEVELS, AND GREEN SPEEDS.**

**THE GOAL IS TO CREATE MAXIMUM ADJUSTABILITY AND PERFORMANCE FOR ALL GOLFERS. THIS GUIDE IS JUST OUR SUGGESTED WEIGHT SETTINGS BUT THE CONFIGURATIONS ARE ENDLESS!**





# MAKEFIELD PUTTERS PRE-SET WEIGHT CONFIGURATIONS



## T-F X MODEL

**STANDARD - 380G**

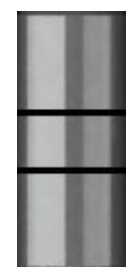
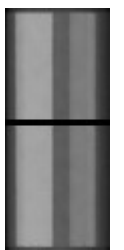
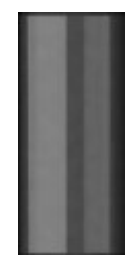
**HEAVY - 398G**

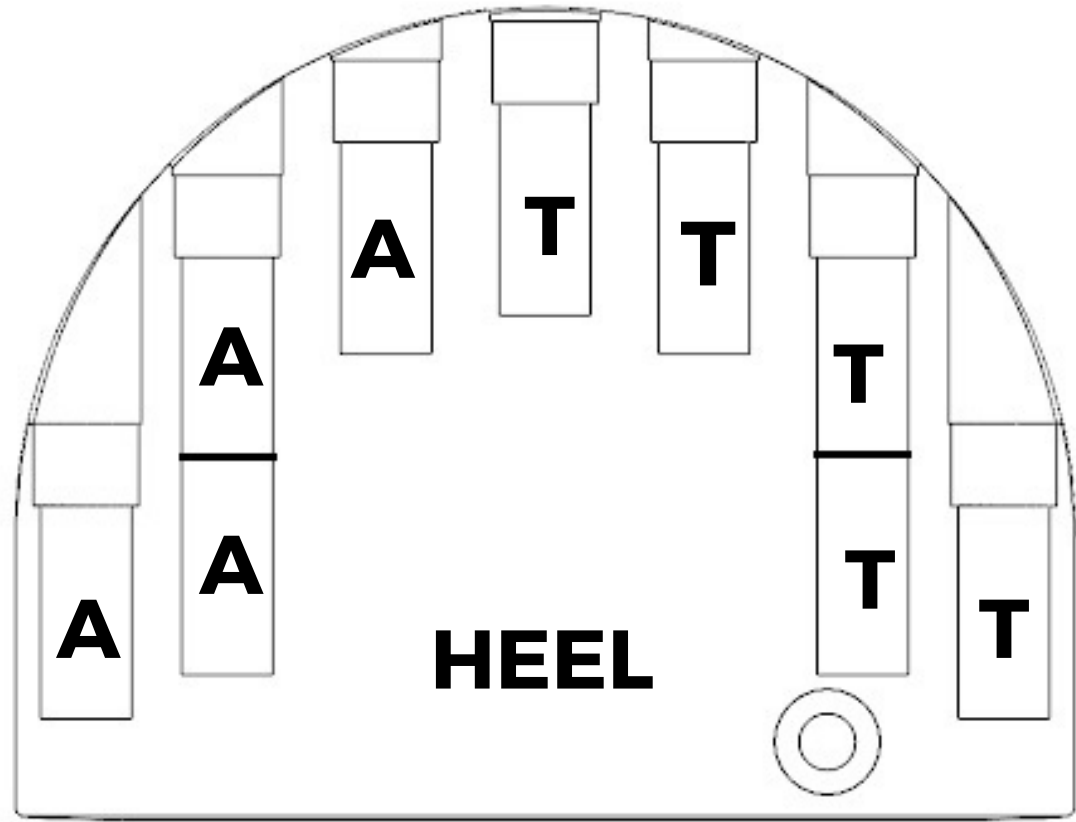
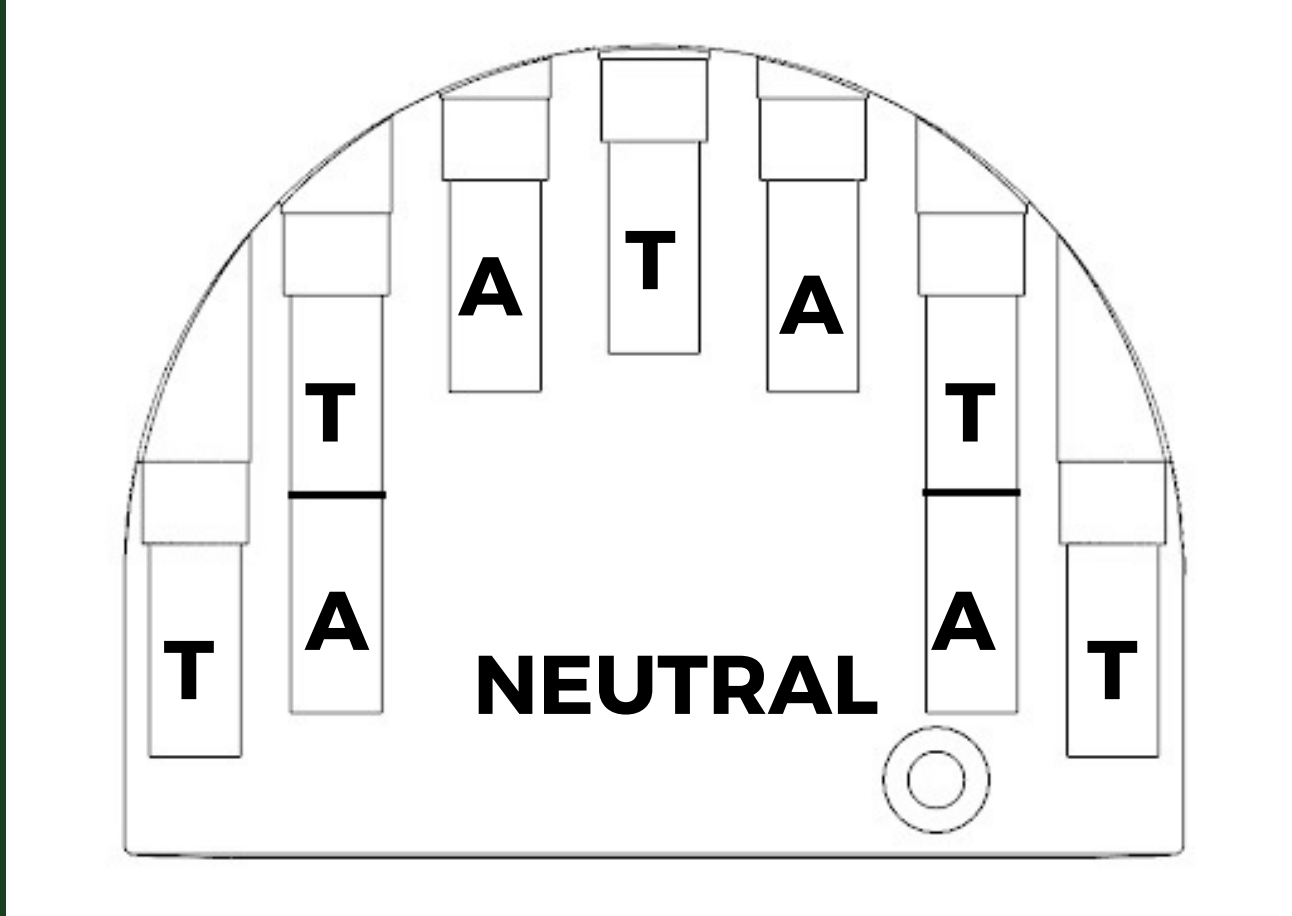
**LIGHT - 362G**

**T = TUNGSTEN - 16G**

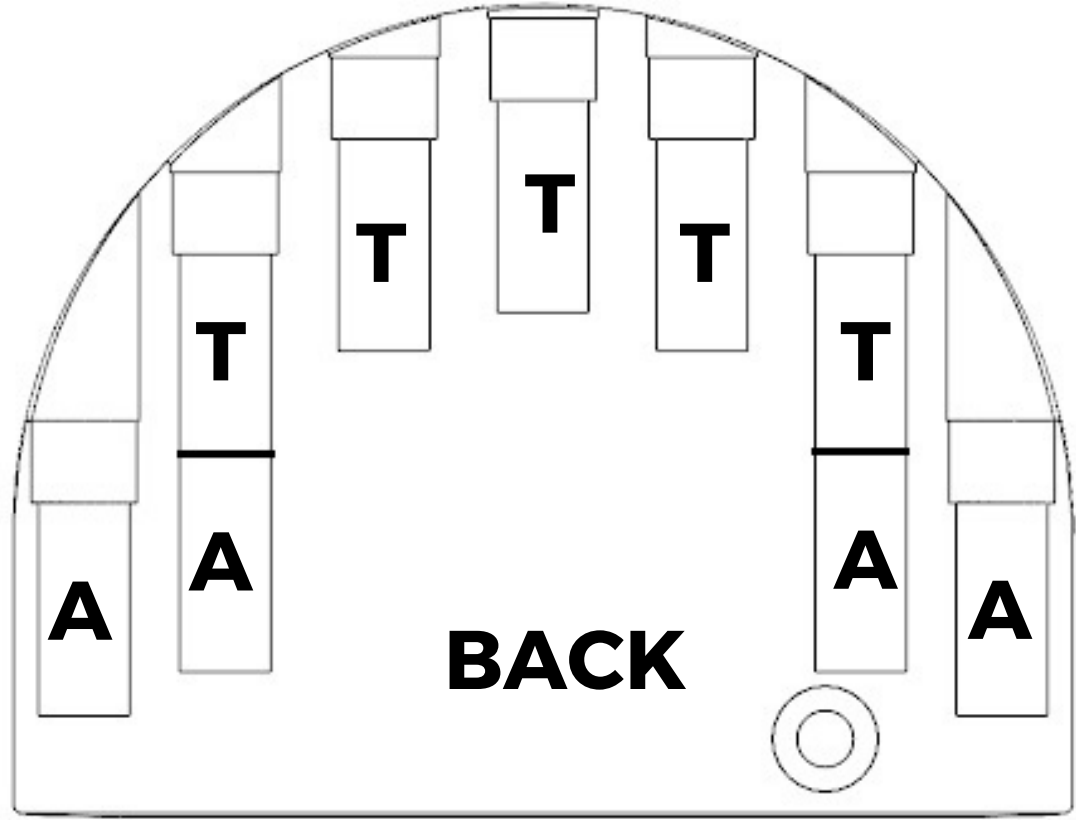
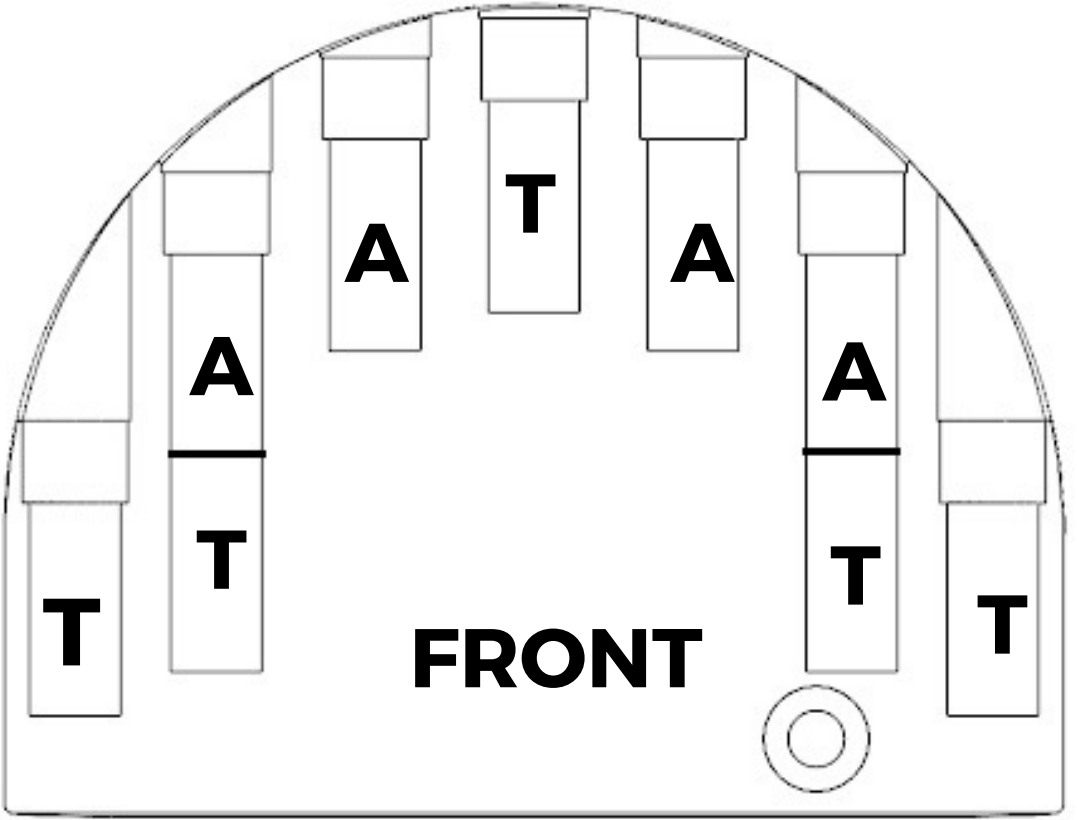
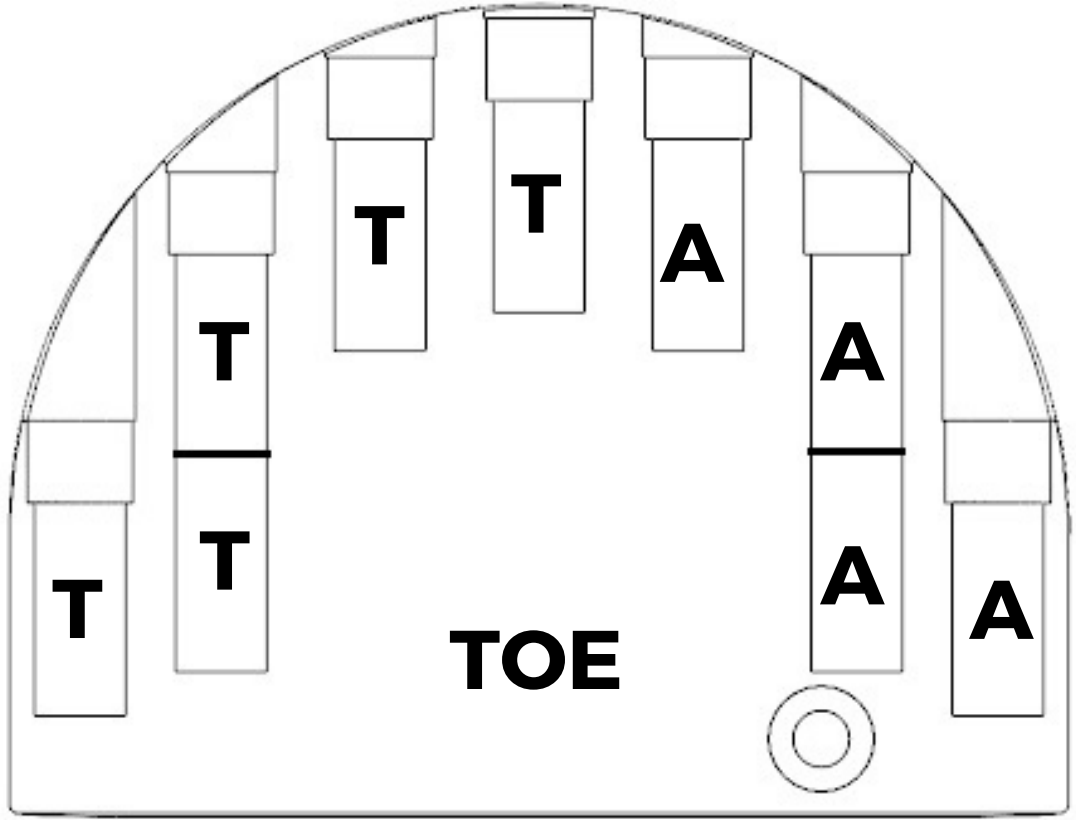
**S = STAINLESS STEEL - 7G**

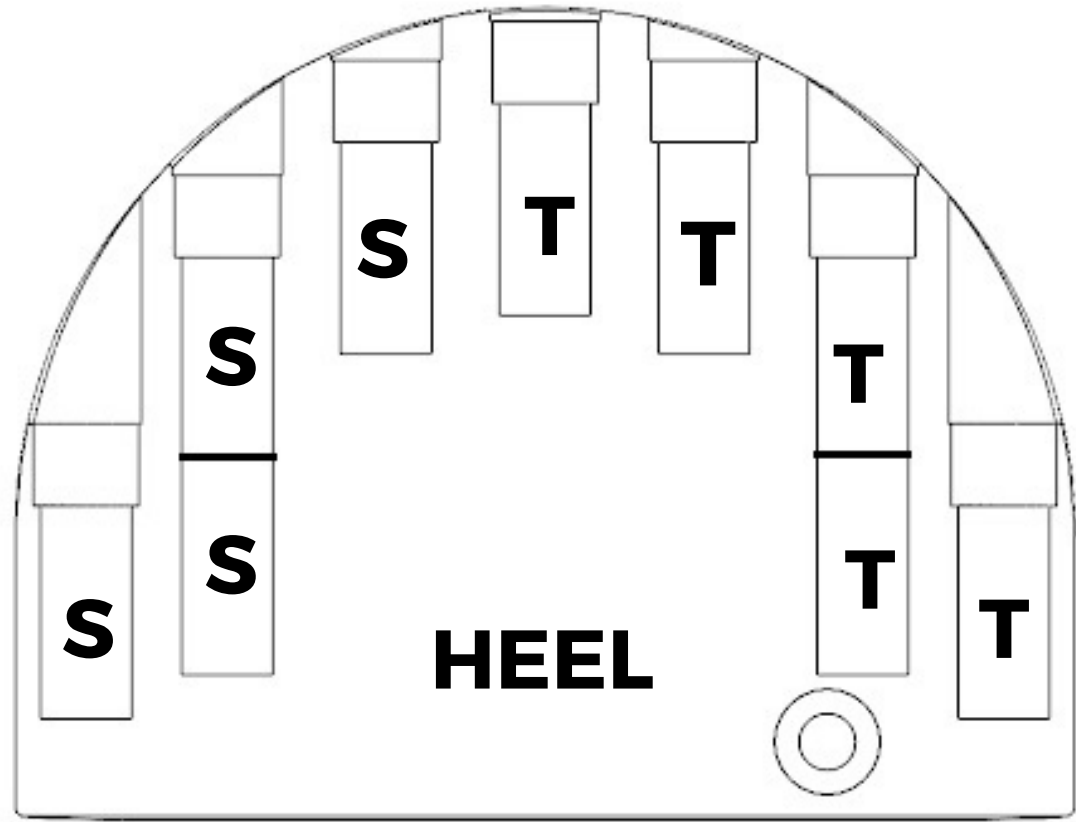
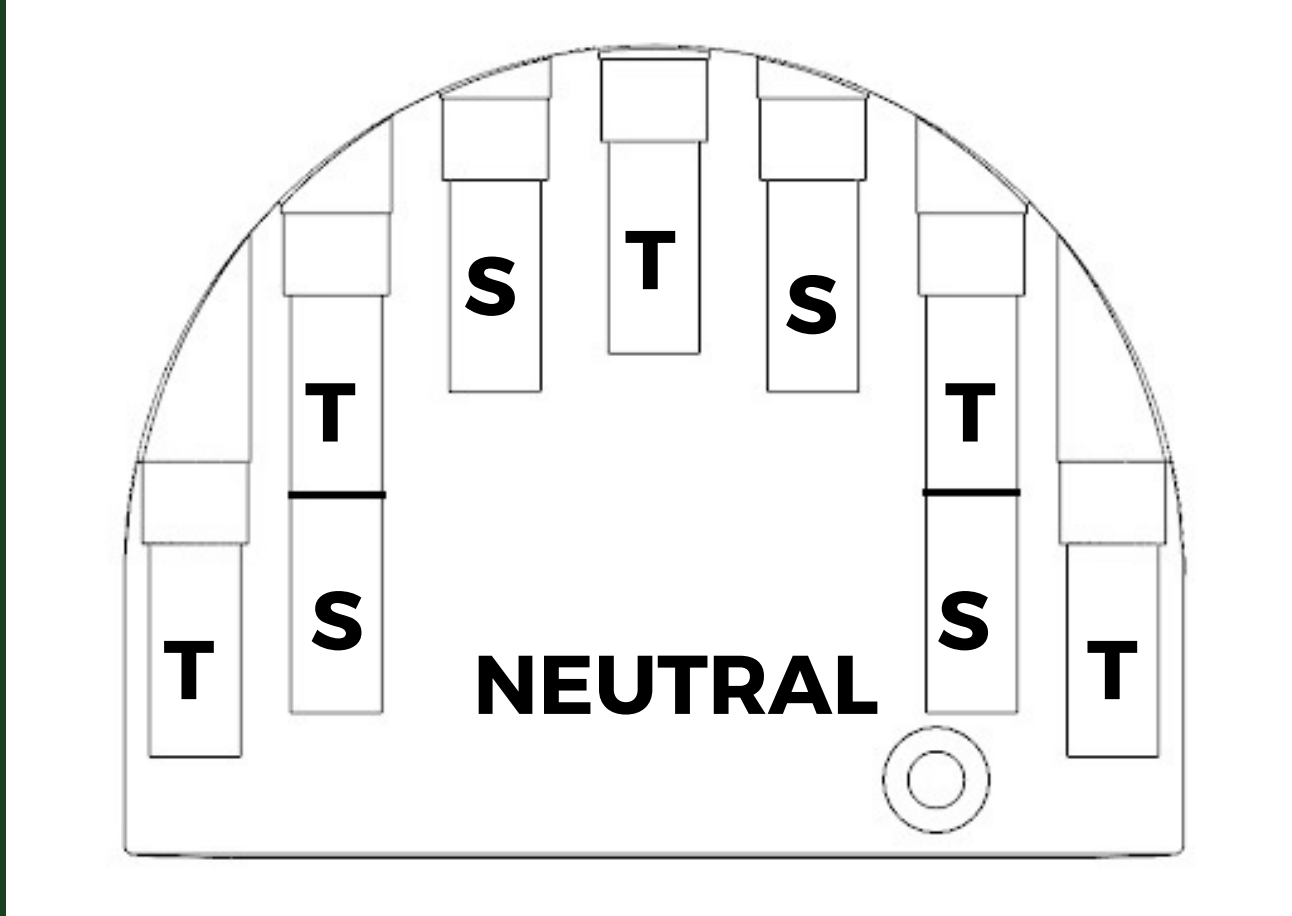
**A = ALUMINUM - 2.5G**



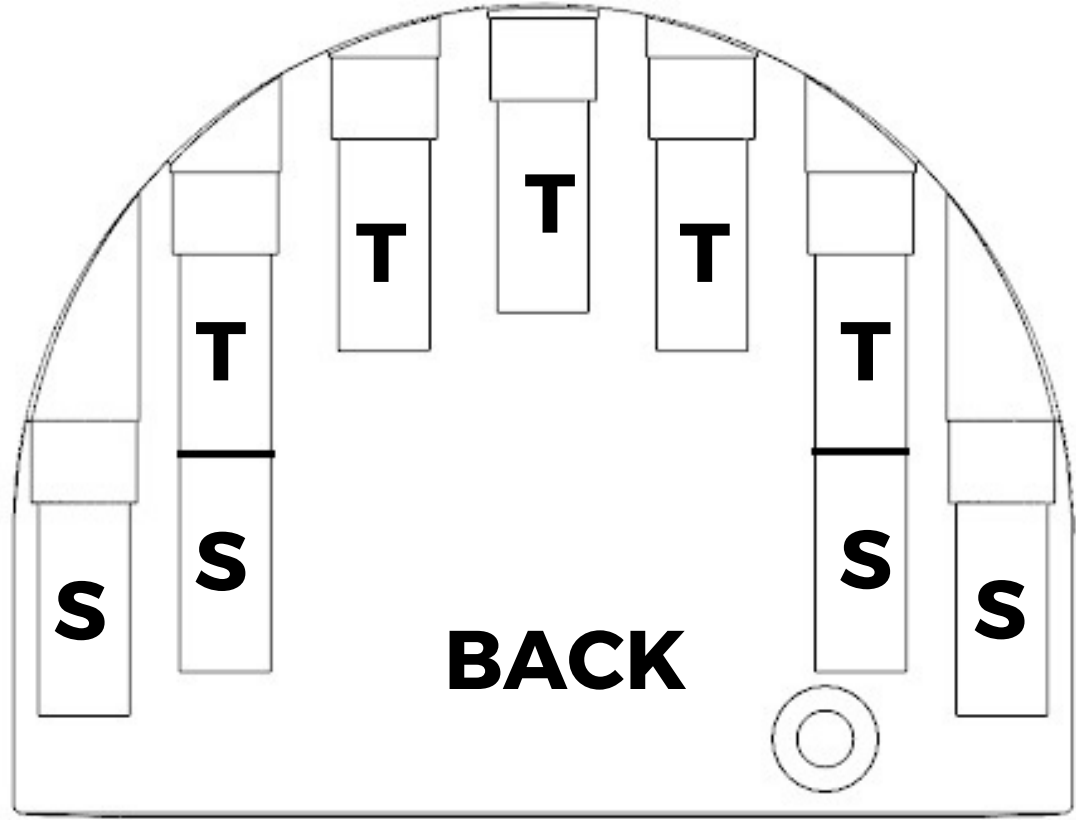
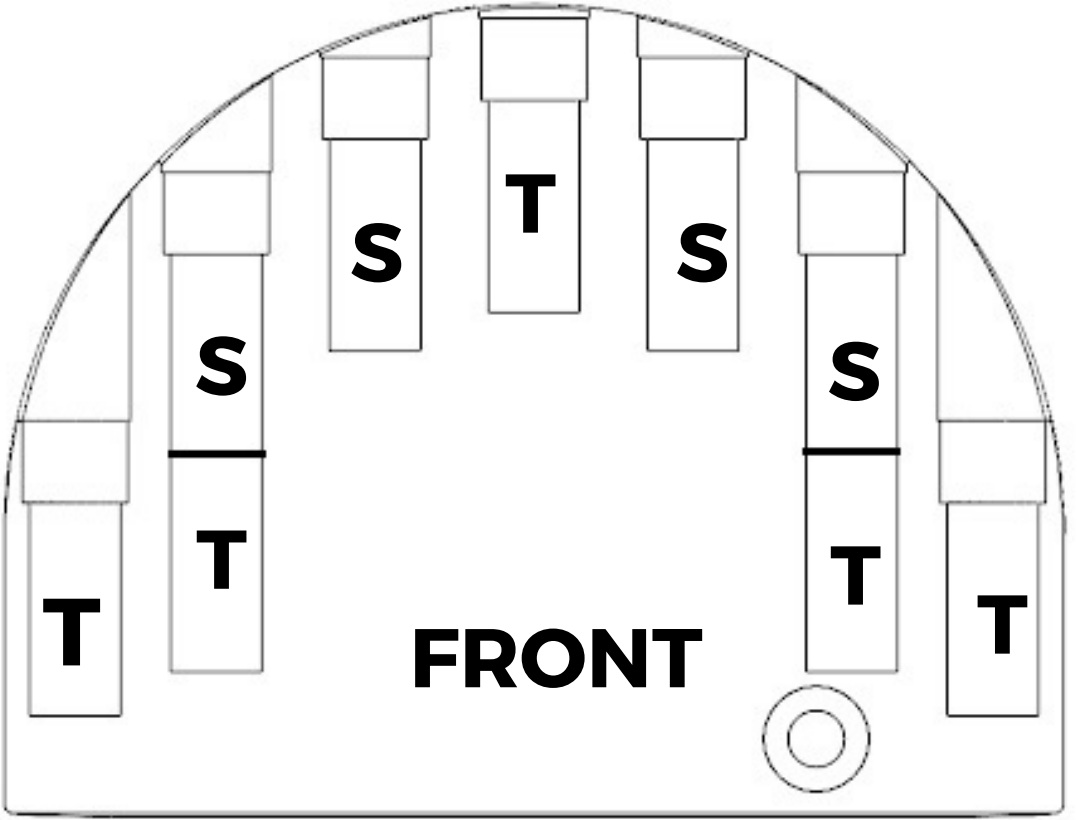
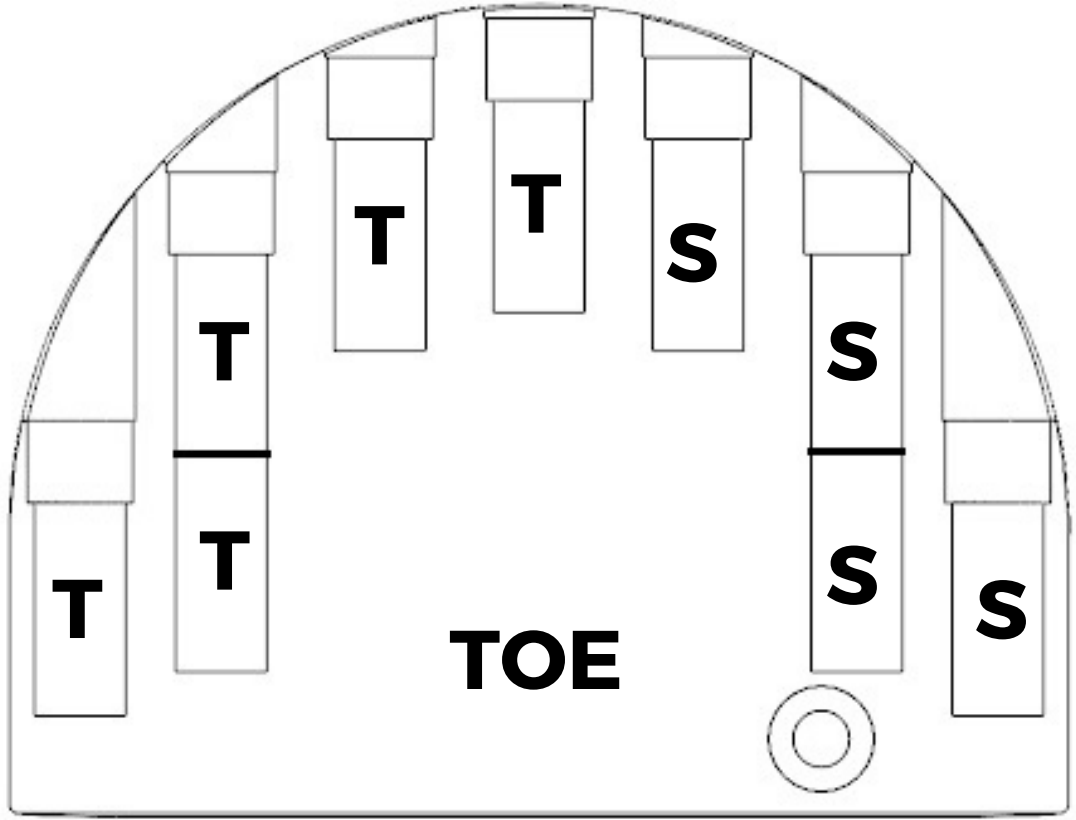


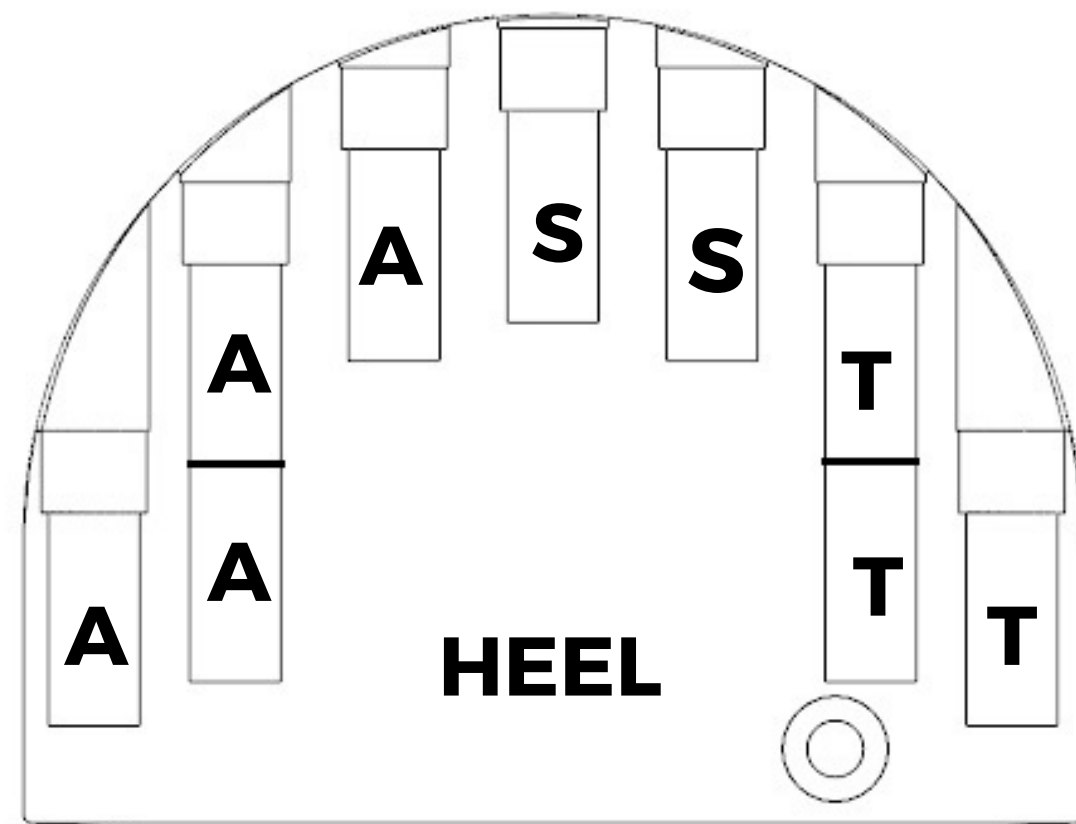
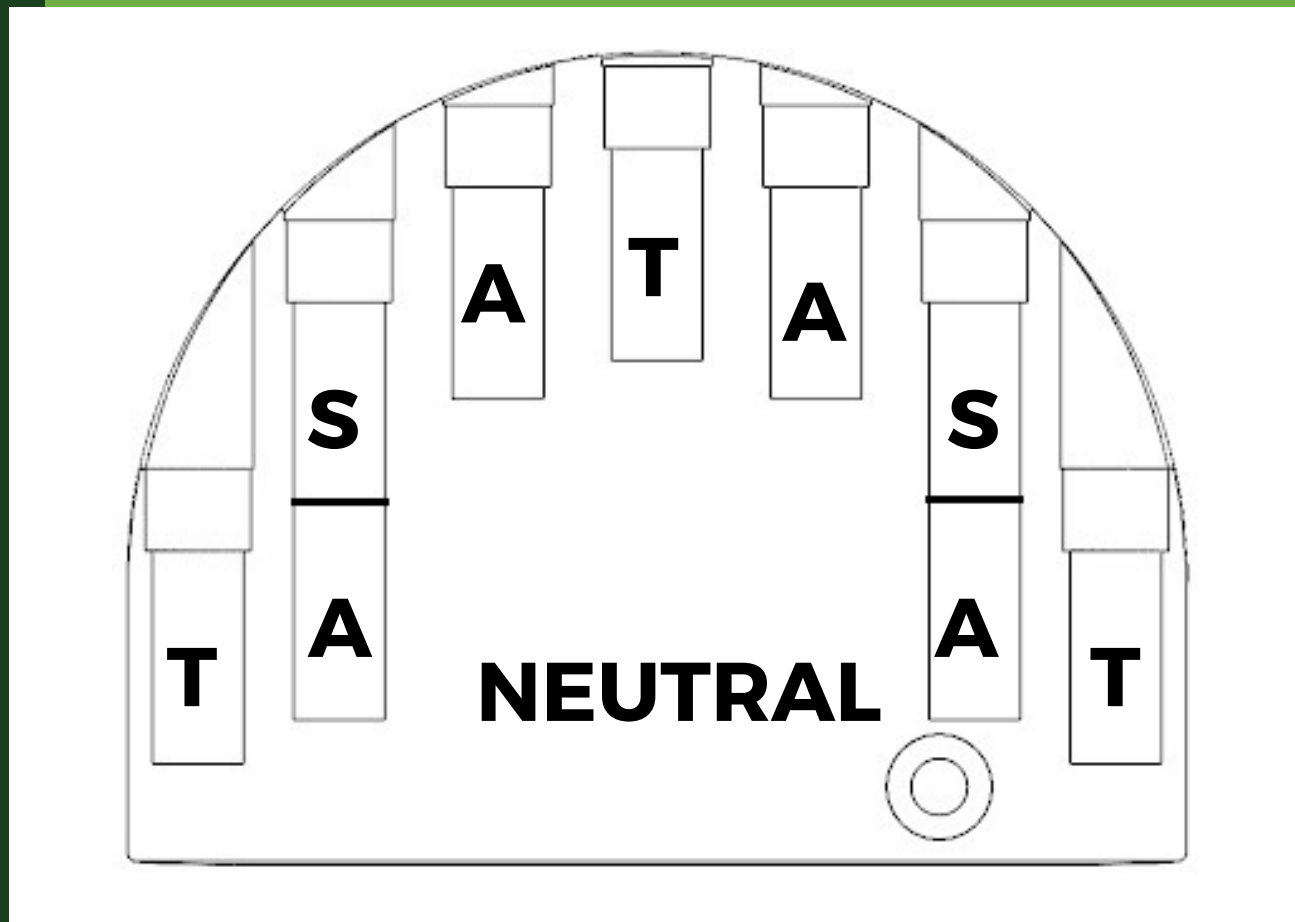
**STANDARD - 380G**





**HEAVY - 398G**





**LIGHT - 363G**

